

## BDBU21 BUDDY

Buddy day bed/attendance chair  
Ideal for maternity, paediatrics and palliative care.

- Ideal for family sleepovers in patient rooms
- Sleeping length 2000mm
- Stylish contemporary design
- Easy operation
- Extends to 2m bed
- Storage area with protective cover for pillows etc
- Space saving
- Fully open head area



## PRODUCT SUMMARY

### Scope of Assessment:

From extraction of raw materials through to production of the final furniture unit (cradle to gate).  
See page 2 for more details.

### Data Used:

Primary data was used wherever possible including for energy use during the core module.  
  
All secondary data was obtained from the EcolInvent database, used in conjunction with SimaPro 7.3.2, using European data only.

### Functional Unit:

A Seating solution designed and manufactured for a useful life of approx 10 years +.

*See website for warranty information.*

## MATERIAL DECLARATION

Material	Amount (kg)	Total (%)
Fabric	4.50	10.86
Polypropylene	0.75	1.81
Nylon 6	0.60	1.45
PU Foam	2.50	6.03
Plywood	22.50	54.28
MDF	5.00	12.06
Steel	5.10	1.21
Cardboard	0.50	1.21

## ENVIRONMENTAL SUMMARY

Global Warming Potential (Kg Co2 Eq):	93.65
Recycled Content (% By Weight):	17.65
Total Energy Consumption (Mj):	3144.50
Recyclability (% By Weight):	99.00

Date of Production: January 2020

## ENVIRONMENTAL PRODUCT ANALYSIS

This Environmental Product Analysis has been created in accordance with, and following the principles of ISO14025 and ISO14044.  
All the Life Cycle Analysis data has been compiled, processed and verified by Oakdene Hollins Ltd.

Compilation and processing of LCA data performed by Dr. Dan Skinner (Oakdene Hollins Ltd.)

Verification of LCA and environmental data performed by Dr. Adrian Chapman (Oakdene Hollins Ltd.)

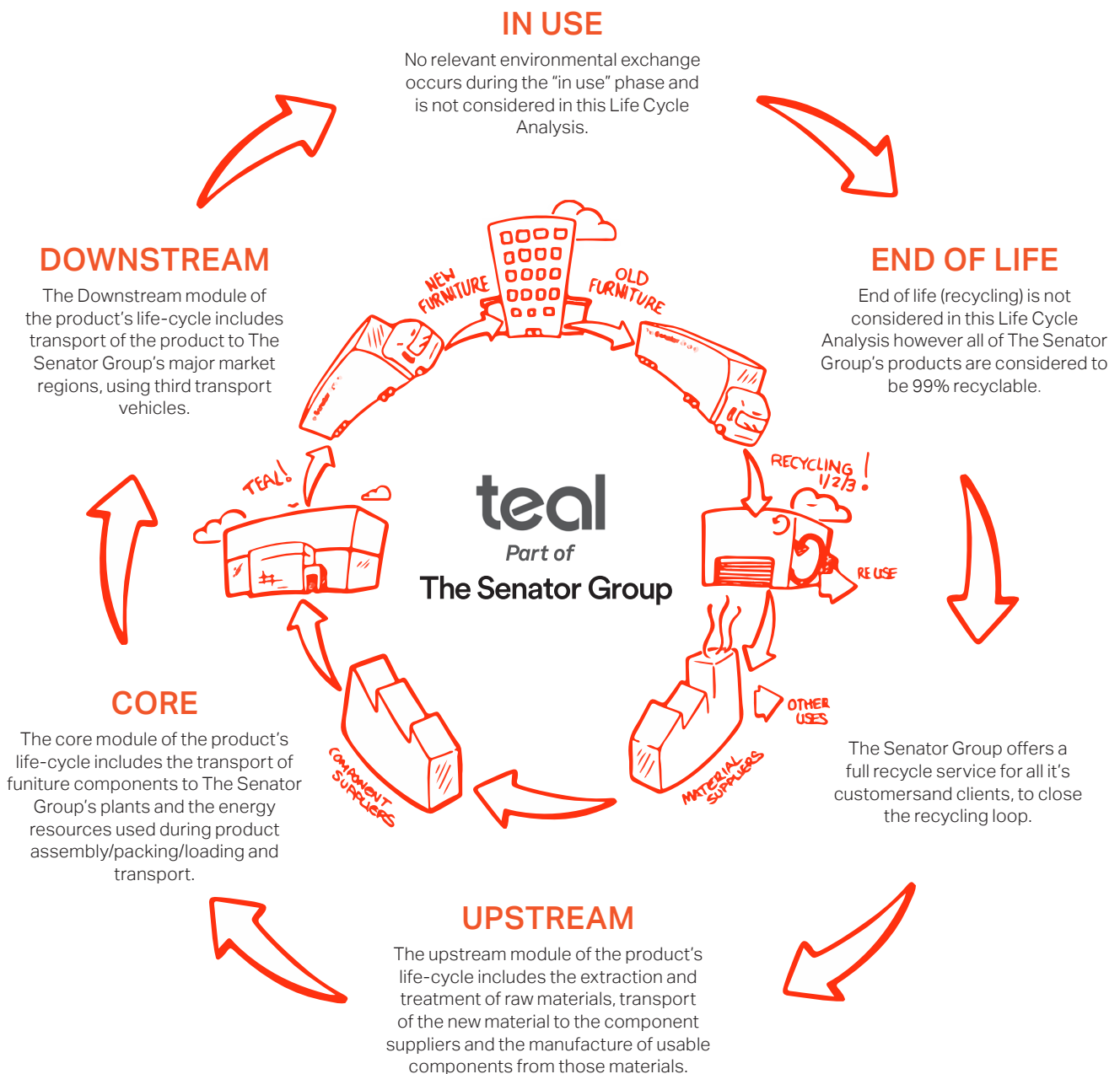
### SUSTAIN

The Senator Group has for many years acknowledged that the key word upon which to focus our attention is Sustainability rather than Recyclability in pure isolation.

Our business takes a truly holistic approach to the design, manufacture, supply and reclamation of our products. We see this as a cyclical process. From design to manufacture, use and reclamation we aspire to minimise all environmental impacts of The Senator Group's products and processes.

We harvest the resources back from the retired products then remanufacture or reintroduce the materials into our component manufacturers supply chain.

We believe in taking responsibility for our own actions ourselves, wherever possible, rather than relying on third parties, or abdicating our responsibilities by offsetting. The process of Sustainability is a cyclical one we understand this and we actively pursue this in everything that we do.



**SYSTEM BOUNDARIES**

Resource (Kg)	Upstream	Core	Downstream	Total
From the Air	108.54	1.50	0.00	110.04
From the Ground	85.95	21.72	1.94	109.61
From The Water	00	0.00	0.00	0.00

**ENERGY CONSUMPTION**

Resource (MJ)	Upstream	Core	Downstream	Total
Biomass	1197.07	16.58	0.04	1213.69
Hydro	39.97	4.97	0.24	45.18
Solar	0.07	0.00	0.00	0.07
Wind	4.55	1.59	0.01	6.15
Non-Renewable Energy (MJ)	1587.55	269.19	22.67	1879.41
<b>Total</b>	<b>2829.21</b>	<b>292.33</b>	<b>22.96</b>	<b>3144.50</b>

**ENVIRONMENTAL IMPACT POTENTIAL**

Resource	Upstream	Core	Downstream	Total
Global Warming (Kg CO2 Equivalents)	77.33	14.99	1.33	93.65
Acidification (Kg SO2 Equivalents)	0.49	0.06	0.01	0.56
Eutrophication (Kg PO43 Equivalents)	0.02	0.00	0.00	0.02
Ozone Depletion (Kg CFC 11 Equivalents)	0.00	0.00	0.00	0.00
Photochemical Smog (Kg C2H4 Equivalents)	0.04	0.00	0.00	0.04

**TOXIC EMISSIONS**

Resource (Kg)	Upstream	Core	Downstream	Total
From the Air	123.97	368.53	130.26	622.77
From the Ground	0.10	0.04	0.02	0.015
From The Water	10.02	6.79	1.93	18.75

**RECYCLED CONTENT**

Material	Recycled Content of Material (% by weight)	Recycled Content In Product (% by weight)
Material	Amount	Percent of Total
Fabric	50.00	5.50
MDF	45.00	5.40
Steel	50.00	6.00
Cardboard	75.00	0.75
<b>Total</b>		<b>3.50</b>

### CERTIFICATES

Description	Accreditation	First Certified
Quality Assurance	ISO 9001	Certified 1991
Environmental Management	ISO 14001	Certified 2001
Chain of Custody	FSC®	Certified 2003
Sustainability	FISP	Certified 2006



### FURNITURE INDUSTRY SUSTAINABILITY PROGRAMME (FISP)

Awarded by FIRA, this sustainability certificate is designed to monitor all sustainability aspects of a company's facilities and operations. The Senator Group achieved one of the first sustainability certifications within the furniture industry – a public declaration of our commitment to improving our performance in every possible way.

### ENERGY MANAGEMENT:

External proof that Senator has implemented a robust system to monitor all energy usage and have a process to continually minimise energy usage.

We believe Senator was the first company in the furniture industry to achieve this standard.

### CHAIN OF CUSTODY

Independent certification to prove Senator only purchases Wood/MFC/MDF/Chipboard from manufacturers who can prove they purchase their raw wood from sustainable sources.

### ENVIRONMENTAL MANAGEMENT

From extraction of raw materials through to production of the final furniture unit (cradle to gate). See page 2 for more details.

### THE THREE R'S

Senator is committed to continually improving the sustainability of all environmental aspects within our business. To meet both international standards and our own environmental targets we apply the three R's principle–

### REDUCE, REUSE AND RECYCLE.

Whilst recycling is the element which receives the most exposure it is actually the last option available and should never be the prime target in anyone's battle to reduce waste.

It is our duty as individuals and as a company to initially attempt to Reduce usage. Then we should look to Reuse wherever possible and finally, only after these two processes have been exhausted, should we consider Recycling.

–Reduce  
–Reuse  
–Recycle

### ASSESSMENT CONSIDERATIONS

The following necessary assumptions and considerations were made during the course of the Life-Cycle Analysis:

- Manufacture of the furniture components was assumed to take place in the same factory in which the raw materials were processed, due to a lack of case-specific data.
- The transport of all materials, components and finished products was assumed to be via 16-32t Euro 6 lorries.
- All LCA data was modelled using the IMPACT 2002+ (v2.06) method.