

Arab Health 2025

Show Guide



teal

teal

Teal HealthCare

Our innovative class leading products help to complement latest healthcare interiors, whilst satisfying the demands of clinical environments.

Teal LifeCare

Designed to meet the requirements of a broad spectrum of challenging environments our collections address all levels of risk and contribute towards a therapeutic and healing patient environment.

Teal is an approved supplier to NHS Trusts and Health Boards throughout the UK.

Find out more:

W: www.teal.co.uk

E: sales@teal.co.uk

 Teal Furniture

HealthCare

Patient Seating, Beam & Bench	04 - 09
Patient Recliners	10 - 15
Overnight Sleep Solutions	16 - 19
Overbed Table	20 - 21
Modular Seating	22 - 25

LifeCare

Soft Seating	26 - 29
Moulded Tub Chairs	30 - 31
Moulded Lounge Seating	32 - 33
Moulded Dining Furniture	34 - 35



Tolero

Patient Chairs

Tolero is a metal patient chair with full feature set, including removable seat, housekeeping wheels, height adjustable legs, slim contoured high back profile and infection management features. Designed for use in hospital and healthcare environments.

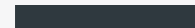
Frame colour options:



Stone



Onyx



Anthracite



Tolero

Patient Chairs



Tolero available with mid back option. All the same features as the high back patient chair but with a 200mm lower back.

Tolero drop arm patient chair
Mobility is a fundamental aspect of patient care, crucial for both physical health and physiological well-being. Drop arm seating ensures patients can move safely and comfortably from a bed to a chair or wheelchair.



Tolero

Bench | Beam



Tolero Bench is ideal for staff areas, public waiting and outpatient areas with slim, ergonomically designed posture back designed for use in hospital and healthcare environments.

Strong, durable high grade tubular metal frame with anti-bacterial easy clean coated finish for infection management. Choose from 2 or 3 seats, without arms or with end arm options.

Tolero Beam offers the same ergonomic seat design but with individual seats for patient comfort in waiting areas.



Nevis

Hybrid Recliner

The latest addition to the Astra range, Nevis is a new manual recliner designed for use in hospital and healthcare environments, maintaining the perfect balance between modern aesthetic and ease of operation, with no compromise on comfort.

A hybrid recliner, Nevis can accommodate bariatric patients up to 220kg (35st/500lbs) and can also be used as a portering chair for patient transfer.



Astra Lunar

Specialist Recliner

Astra Lunar is a specialist Electric Reclining Patient Chair for multiple healthcare settings including ICU, Neurology, Oncology, Maternity and Patient bedrooms.

With a high specification as standard Lunar can be customised from a suite of options, including emergency back release. Dual motor controls allow independent control of the back and leg rest for personalised comfort.



Astra Stellar

Electric Recliner

Astra electric recliner designed with enhanced patient features, for treatment areas including Oncology, Renal and Recovery Suites.

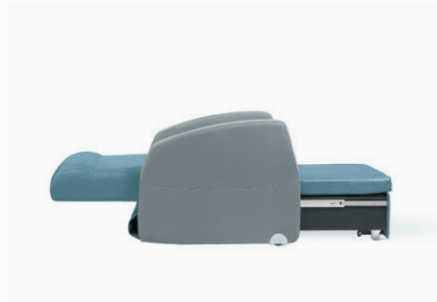
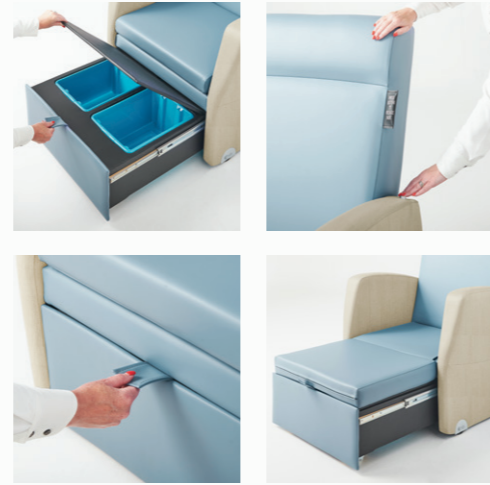
Astra Stellar has a high specification as standard including emergency back release and can be customised from a suite of options.



Buddy

Attendant Chair | Day Bed

Buddy is designed for relaxation and for family sleepovers in patient rooms. Ideal for maternity, paediatrics and palliative care. Stylish contemporary design and easy to operate, Buddy extends to a 2-metre bed, with fully open head area and storage compartment with protective cover for pillows, blankets and other accessories.



Moby

Sofa Bed

Moby can help make the most of your space. Designed to fit into a patient room and provide a sleepover option when opened, whilst still maintaining a small footprint when closed.

Moby is designed with space and style in mind and easily converts into a 2-metre bed, with a practical underbed storage box for pillows and blankets. Compact option available without arms, suitable where space is limited.



Infiniti

Overbed Table

Infiniti overbed table with sleek, sturdy design and horseshoe base, which allows usage around a chair or over a bed with infection control features to suit healthcare environments.

Smooth action height adjustable overbed table with anti-entrapment feature, high quality cast base with anti-bacterial finish and smooth, sealed underside. KYDEX® and tilt top options available.



Quad

Modular Seating

Quad is an easily configurable modular seating range, scalable using a palette of elements to create different room layouts in reception, waiting or outpatient areas.

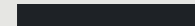
Multiple configuration options:

- + 90° curved or straight seat options, end arm(s), curved fabric end seats and wood finish table ends
- + Full back or sacral gap model options
- + Leg finish options (Onyx, Anthracite, Stone)

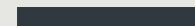
Leg finish options:



Stone



Onyx



Anthracite



Core

Chair | Beam seating

Core and Core Beam combine simple, timeless modern design with long lasting durability. Suitable for waiting and outpatient areas, training rooms, conference or meeting spaces.

Multiple options, including plastic back & seat, plastic back & upholstered seat, upholstered back & seat, with & without arms.



Murano

2 Seater Sofa

With its smooth, organic shape and ultra-contemporary design, Murano eliminates angles and creates a softer and calmer visual form in challenging environments.



Jenna

Sofa & Armchair Collection

Jenna, with armchair, sofa and high back options offers fresh interpretation and styling to create a visually striking collection for use in challenging environments.



Roku[®] Tub Chairs

Moulded Tub Chairs

An innovative, hexagonal, rotationally moulded chair designed by Ben Grafton, with complete anti-ligature, concealment free design.

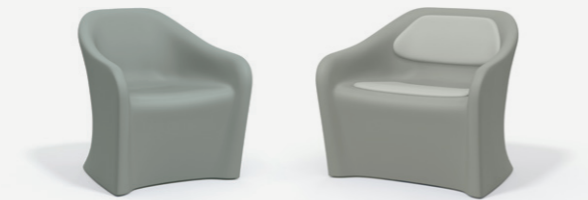
Weighted, durable and suitable for multi-environment use, both indoor and outdoor, including high security. Available fully upholstered or non-upholstered.



Roku® Marna

Moulded Lounge Seating

The latest addition to the Roku® series is a new lounge seating collection with smooth organic lines, unique wide seat option, ligature resistant, concealment free design and a soft colour palette for a calming aesthetic.



Button

Dining Table & Stool Range

With its compact form the Button oval table and multi-purpose stool have been designed to exploit the possibilities offered by rotationally moulded plastics, both indoors and outdoors.

Both the Button table and stool can be weighted for added safety and to prevent misuse (medium weighting +20kg).



teal

Branch Road
Lower Darwen
Lancashire
BB3 0PR

Tel: +44 (0) 1254 688210
Sales Freephone: 0800 980 8998
Email: sales@teal.co.uk
www.teal.co.uk

